

Yamhill Soil & Water Conservation

District helps urban and rural landowners in many areas:

- Manage livestock, manure and nutrients to improve water quality
- Protect, restore or enhance wetlands, riparian areas and wildlife habitat
- Install backyard conservation practices to attract wildlife, conserve water or minimize the use of pesticides and herbicides
- Control invasive weed species
- Manage small farms and acreages
- Plan whole-farm systems for conservation land stewardship objectives
- Implement crop, pasture and forest practices to optimize production and sustainability

Putting the Soil & Water Conservation District to Work for You!

Natural Resource Concerns

Soil protection, water quality and quantity, wetland and floodplain protection, native plant and wildlife protection, land use and development, forest and woodland management.

Yamhill SWCD prohibits discrimination on the basis of race, color, national origin, gender, religion, age, disability, political belief, sexual orientation, and marital or family status.

Board of Directors
Sam Sweeney, Chairman
Barbara Boyer, Vice Chairman
Jesse Lange, Secretary
Jim LeTourneau
Mark Huff
Gordon Dromgoole
Glen Grauer
Mark Huff

Yamhill SWCD Staff
Tim Stieber, District Manager
Dean O'Reilly, Conservationist/Technician
Michael Crabtree, Resource Conservationist
Dalena Gagatko, Office Administrator
Amie Loop-Frison, Riparian Specialist

Conservation Partners
Yamhill Basin Council
Natural Resource Conservation Service
Farm Service Agency
Oregon Department of Agriculture
Oregon Department of Fish & Wildlife
Oregon Department of Forestry
OSU Extension Service
US Fish & Wildlife Service



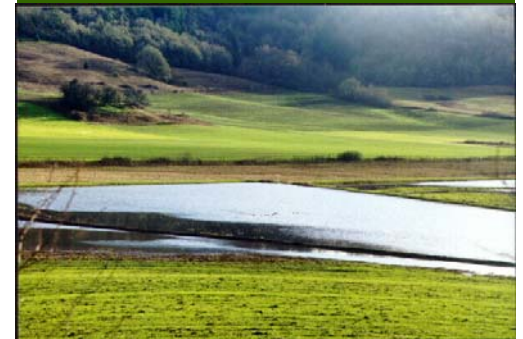
Yamhill
Soil & Water
Conservation District

2200 SW 2nd Street
McMinnville, OR 97128-5444

Phone: 503-472-1474 x3
Fax: 503-472-2459
yamhill.swcd@oacd.org
www.yamhillswcd.org



Yamhill
Soil & Water
Conservation District



Providing Natural
Resource Assistance
for Healthy Watersheds

What is a Soil & Water Conservation District?

Through education, outreach and technical assistance, SWCD's promote voluntary natural resource conservation and provide "on the ground" activities to benefit landowners, communities, and watersheds.



The District's main objective is to provide landowners with the tools and information they need to help manage their land. The result is cleaner water, more productive lands, and improved wildlife habitat.

For over 50 years the Yamhill SWCD has helped farmers and ranchers develop voluntary conservation plans, which outline measures to control erosion, conserve water and improve crop and forage production.

The district also helps the general public obtain soils information and other natural resource information in such areas as weed control, the creation of wildlife habitat, forestry management, and other related areas.

Soil & Water Conservation Districts— Setting Resource Priorities

Soil & Water Conservation Districts are sub-units of State government working at a local level. The Yamhill SWCD works with local landowners to help set natural resource priorities and works to increase voluntary conservation among farmers, ranchers, foresters, landowners, and the communities within Yamhill County.

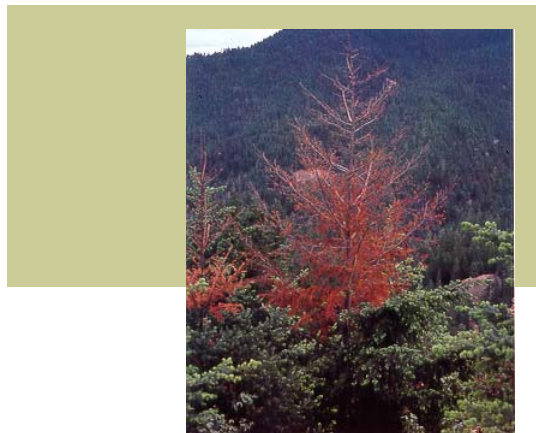
Getting Conservation on the Ground

The Yamhill SWCD is working to build voluntary partnerships between private landowners and conservation agencies to facilitate conservation of natural resources in the county.

As a resident of Yamhill County you have the opportunity to work with the Yamhill SWCD and take advantage of the many services it offers.

If you are interested in improving the quality of our land, water, wildlife, fish, and other natural resources, there are a number of things you can do:

- Implement conservation practices on your land
- Volunteer as a District Associate Director
- Volunteer to help with any of the District's many projects
- Stop in at our office to pick up any of our free informational materials



About Yamhill County

Founded in 1843 as one of four original Oregon Counties, Yamhill County lies in the northern end of the Willamette Valley.

Its 718 square miles contain lush farmland, fine wineries, the world famous "Spruce Goose", and a historical heritage unsurpassed in Oregon.

Established: July 5, 1843

Population: 88,055 (from data provided by the year 2002 census).

Annual Precipitation: 43.62 inches

Average Temperature: January, 39.1°, July 65.4°

Principal Industries: Agriculture, Lumber, Education, International Aviation, Dental Equipment, Manufactured Homes, Pulp & Paper, Steel



Agriculture is the principal industry in Yamhill County, with a proportion of employment in agriculture being twice that of the

average in the state. The county ranks third out of the 36 counties in annual market value of agricultural production. Numerous wineries lie scattered about the county, the largest concentration in any county, and they produce the greatest number of award-winning wines in the state.

Yamhill
Soil & Water
Conservation District

2200 SW 2nd Street
McMinnville, OR 97128-5444

Phone: 503-472-1474 x3

Fax: 503-472-2459

yamhill.swcd@oacd.org

www.yamhillswcd.org

Contact us for more information.